



Milton Road, Herne Hill, SE24

1 bedroom flat - conversion for sale

£500,000

Share of Freehold

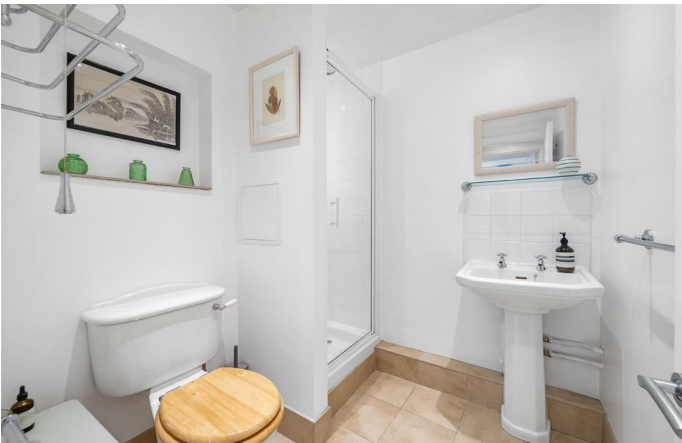
Property Details

This sizeable one bedroom garden flat is set within an attractive Victorian conversion on Milton Road, benefiting from a private entrance and a versatile layout spanning over 650 square feet. The property is presented as a well-finished blank canvas with bright interiors and well-proportioned rooms throughout. The sizeable reception room is bathed in morning sunlight through a sash bay window and is complemented by wooden flooring, shelving and integrated storage. The separate kitchen is set to the rear, offering a sociable layout with built-in appliances, ample storage, a breakfast bar and space for dining or relaxing. French doors open onto a tranquil private garden with lawns, a patio area ideal for al-fresco dining, a productive rosemary bush and a pond. The generous double bedroom overlooks the garden and benefits from built-in wardrobes, whilst additional features include a study area, underfloor heating, LED down-lighting and recently refreshed exterior decoration.

Features

- One double bedroom
- Private garden
- Study area
- Separate reception previously used as a second bedroom
- Victorian conversion with private entrance
- Desirably located in Poet's Corner
- Brockwell Park at end of the road
- Herne Hill station in six minutes
- Central Brixton a ten minute stroll
- Share of freehold. Chain-free

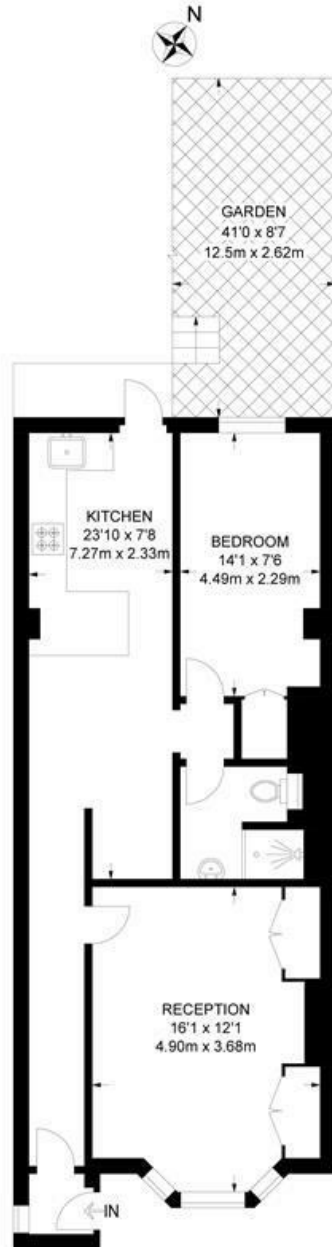
Council tax band C EPC rating D (65)



Milton Road, Herne Hill, SE24

Milton Road, SE24
1 Bedroom Flat

APPROXIMATE GROSS INTERNAL AREA: **637 SQ FT / 59.2 SQ M**



LOWER GROUND FLOOR



While we try our very best, floor plans are produced as a guide only and we take no responsibility for the precise accuracy with which any property is represented.

Milton Road, Herne Hill, SE24

